

Software Upgrading Aavik DACs

This document describes installing software upgrades on the Aavik D-180, D-280 and D-580 DACs. These upgrades provide various bugfixes.

You will need a Windows PC (Windows XP or later), and either a DE-9 male to female serial cable (if the PC has a built-in serial port), or a USB to serial converter cable.

Download the latest control software version from the Aavik Acoustics FTP server. Using a browser, this link can be used: <ftp://aavik:aavik@firmware.aavik-acoustics.com>

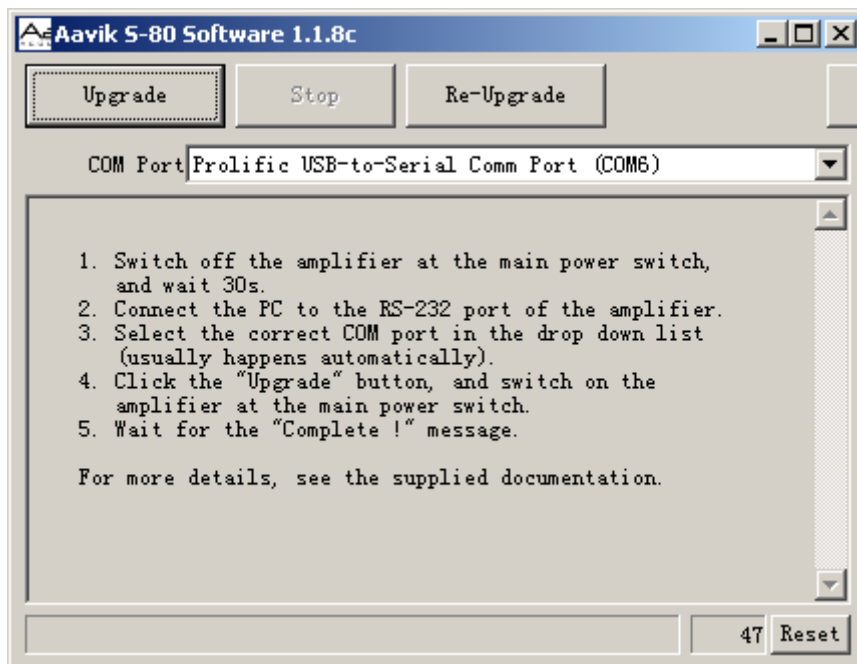
Note that Microsoft Edge does not support FTP. Please use another browser like Google Chrome, Mozilla Firefox or Microsoft Internet Explorer.

If you are using an FTP application, the server name is `firmware.aavik-acoustics.com` and the username and password is `aavik`.

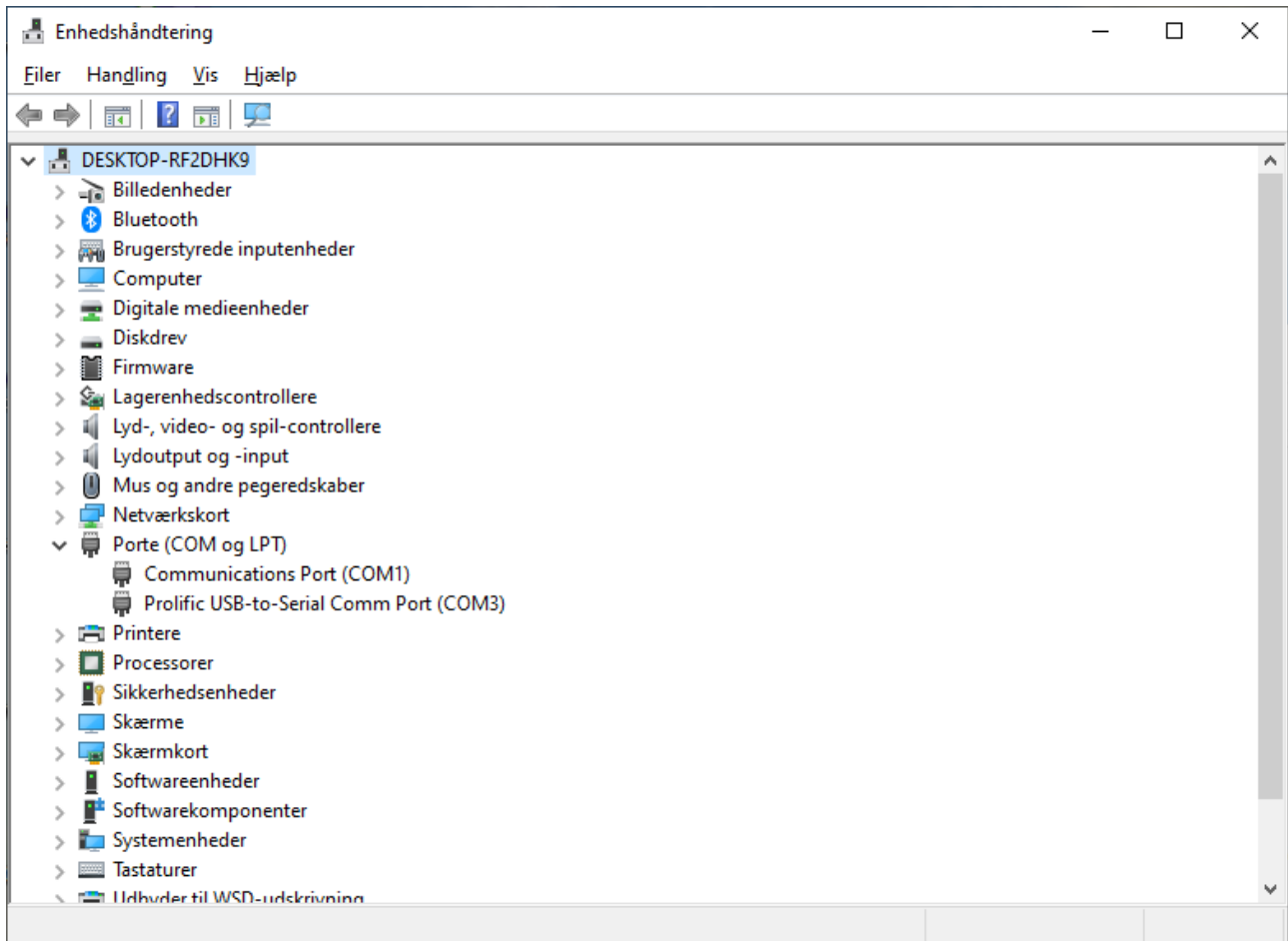
Navigate to the `D-180_D-280_D-580_R-180_R-280_R-580` folder, and download the latest release.

Now connect the RS-232 port of the streamer to the PC using either a straight through DE-9 male to female serial cable, or a USB to serial/RS-232 cable. If you have never used the USB to serial cable before, Windows may prompt you for drivers. These should be supplied with the cable if needed.

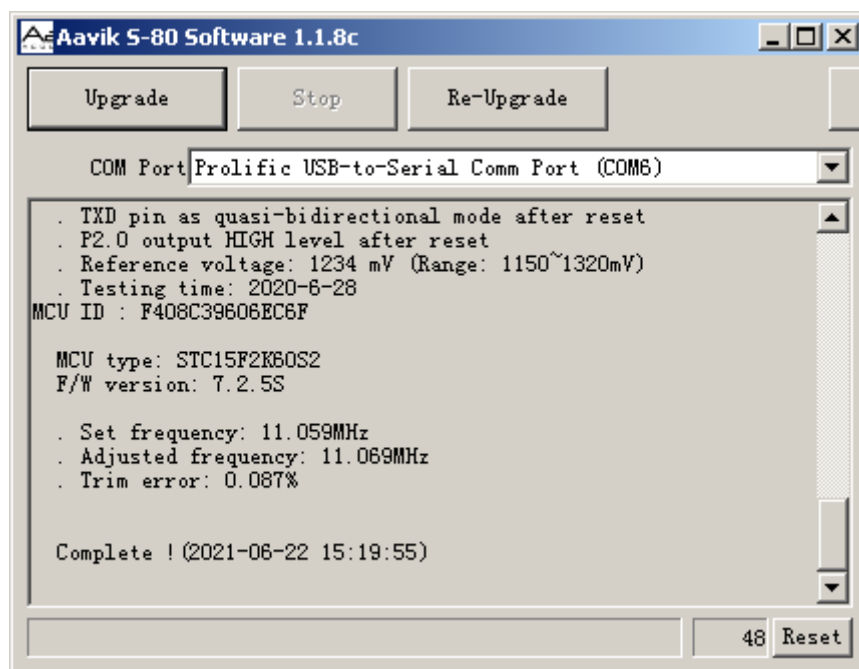
Run the upgrade software you downloaded previously (a file named `RD80_abc.exe`, with "abc" being the version number).



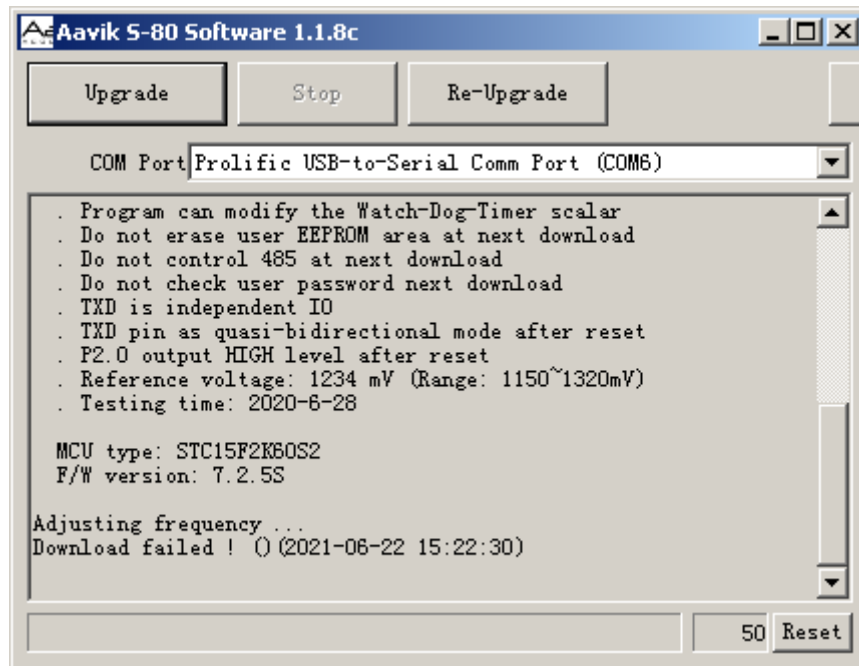
The "COM Port" dropdown list usually select the correct serial port automatically. You can find a list of serial ports in your PC by using "device manager"



To upgrade the DAC software, turn off the DAC on the back panel power switch, and leave it off for 30 seconds. Now press the "Upgrade" button in the upgrade software window, and switch on the DAC main power approx. 2-3 seconds afterwards. Now the software should get upgraded, and the "Complete" message should appear in the software message area.



If you see a message like "Download failed", switch off the main power for 30 seconds and start over.



When you get the "Complete" message, the upgrade process is complete, and you can switch off power and disconnect the serial cable.